

Legend

- - - - - Control Joint - - - - - Expansion Joint

Roof Top Units

	HVAC on Curb		Skylight
	Roof Hatch		Unit on Curb
	HVAC on Sleepers		Unit on Sleepers

Projections

●	Plumbing Stack	●	Hot Stack
■	Pitch Pan	○	Metal Sleeve Stack

Drainage

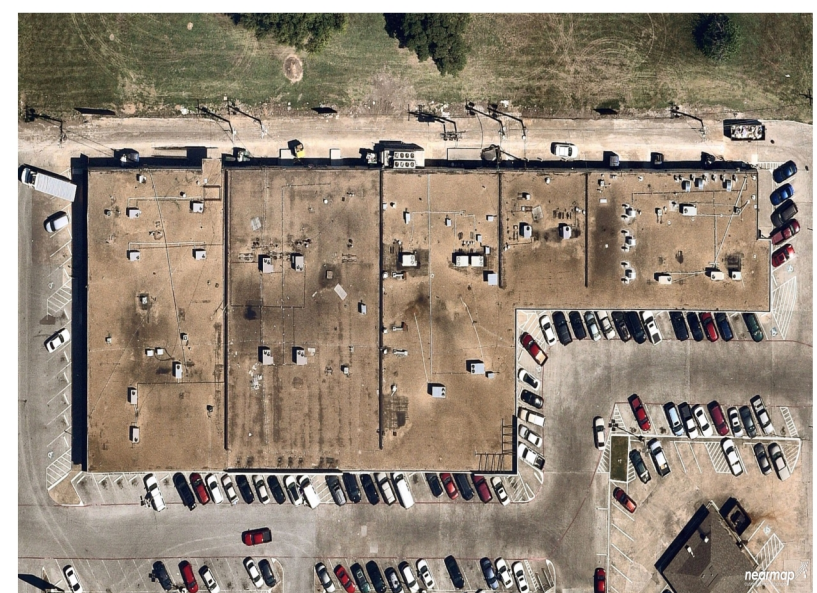
	Drain (Existing)		Scupper
	Drain (New)		

Miscellaneous

—	Gas Line		Crickets
—	Walkway		Roof Level Change
—	Paver Walkway		Core Test
—	Conduit		

Problem Indicators

	Ponding		Bare Spot
	Wet Insulation		Photo Indicator

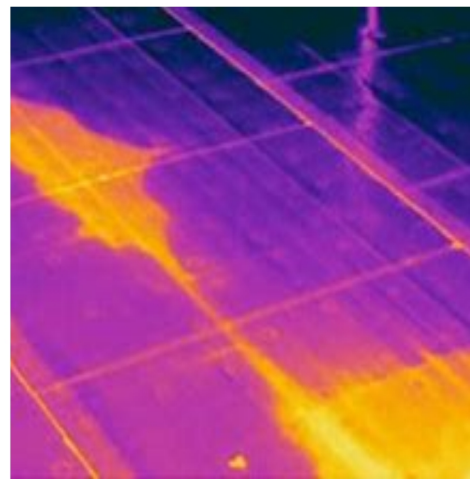


Core #1
 4 ply Built Up
 2" Perlite Insulation
 Concrete deck

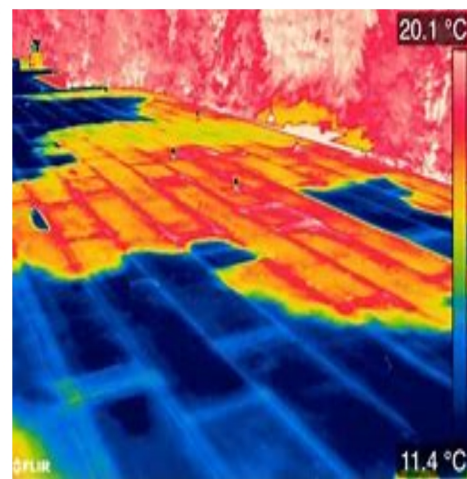
Core #2
 4 ply Built Up
 2" Perlite Insulation
 Concrete deck

Core #3
 4 ply Built Up
 2" Perlite Insulation
 Concrete deck

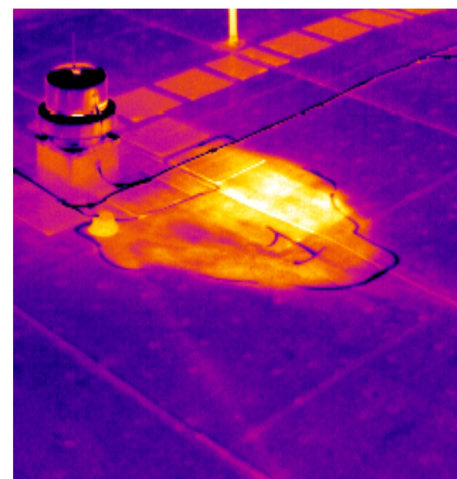
Core #4
 4 ply Built Up
 2" Perlite Insulation
 Concrete deck



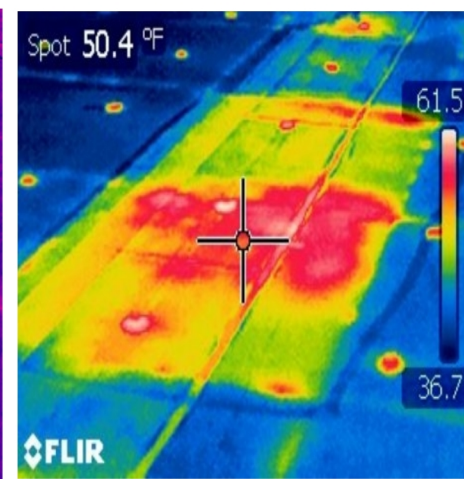
Area 1



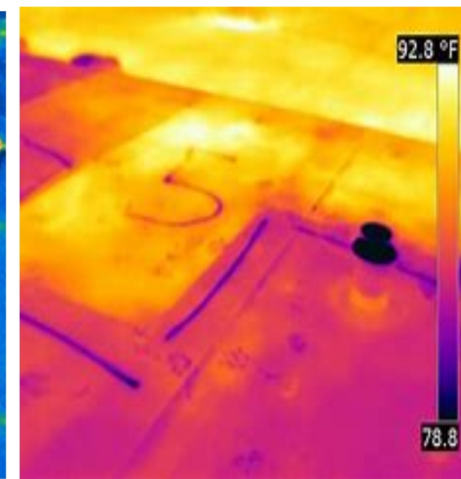
Area 2



Area 3



Area 4



Area 5

Notes

Existing 4 ply built up roof over 2" perlite insulation and concrete deck. 3969sqft of wet insulation will need to be removed and infilled prior to recover. Strongly suggest the addition of insulation crickets along the low wall to direct water to existing scuppers.

Estero Infrared Thermography Inc.
 100 Estero Blvd., Ft. Myers, FL, 12345
 Tel: (941) 123-4567 Fax: (941) 123-4568

Project: Swing Arm Plant

Customer: Jarvis Manufacturing

DWG. By: SDP

Date: Feb 23, 2022 Scale: N.T.S.

This drawing is the property of Estero Infrared Thermography Inc. It may not be reproduced without consent.